



PE

3648 Jaw Crusher

The Affordable Alternative in New Crushing Equipment

Standard Features

- Single wall main frame of stress relieved steel
- Open back for easy maintenance
- All working parts lubricated for moisture and dirt protection
- Reversible manganese jaw dies for maximum wear life
- Large, spherical, self-aligning roller bearings
- Isolated, close running annular/labyrinth seals protect bearings from dust and water
- Removable pitman/bearing assembly for maintenance ease
- Hydraulic shim adjustment
- Heavy duty, cast steel pitman with machined barrel
- Machined pitman face for full swing jaw die support
- Smooth running flywheels with compression ring fastening arrangement
- Feed plate and pitman wear plate
- Three piece Heavy duty fix and swing Jaw die

Optional Features

- Electric motor
- Drive sheave and bushing

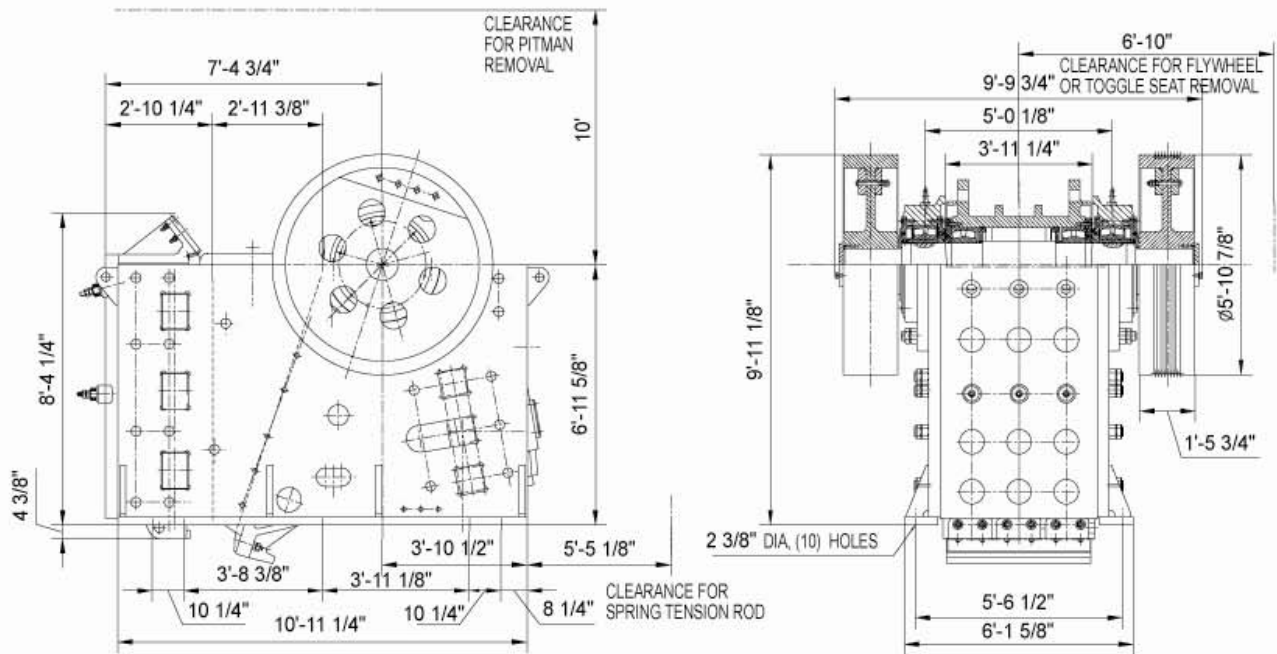


The Affordable Alternative in New Crushing Equipment

Specifications

Feed opening	36" × 48"
Discharge setting	4" to 8"
Maximum feed size	30"
Production range	280 to 450 TPH
Discharge setting	
4"	280 to 340 TPH
4-1/2"	300 to 350 TPH
5"	320 to 370 TPH
6"	360 to 400 TPH
7"	380 to 420 TPH
8"	400 to 450 TPH
Required horsepower	200 HP
Rotor speed	200 RPM

Weights (LBS)	
Crusher	110,000
Complete pitman with wheel	44,300
Flywheel	7,040
Toggle plate	1,040
Swing jaw die (3 piece)	3,900
Fixed jaw die (3 piece)	4,100
Side plate (4 piece)	1,650
Bearing information	
Pitman bearing No.	23180CA/W33
Frame bearing No.	23180CAK/W33



Note: Because of the nature of jaw crushers, it is not possible to produce a product all of which will pass a screen opening equivalent to the discharge setting. Oversize should be expected, and will fluctuate depending on the rock characteristics. For close settings, all undersize material should be screened off to increase the effectiveness of the jaw and to reduce wear on the jaw dies. Although the crusher may be configured to have a different discharge opening than indicated above, this crusher model is not designed to operate at other settings.

Design & Specifications Subject to Change Without Notice

11020 Cherry Avenue, Fontana, CA 92337
 Tel: (909)823-1688 Fax: (909)823-6868

June 2009